

Limited Warranty

United States and Canada

WHO IS ELIGIBLE FOR WARRANTY COVERAGE?

You are eligible for the benefits of this limited warranty if you meet all of the following criteria:

- You are the owner or authorized agent of the owner of new Kelly® medium radial truck tires.
- Your tires bear Department of Transportation (DOT) prescribed tire identification numbers and are not branded “NA” (Not Adjustable).
- Your Kelly medium radial truck tires have been used only on the vehicle on which they were originally installed according to the vehicle manufacturer’s or Kelly’s recommendations.
- Your tires were purchased on or after January 1, 2013.

WHAT IS COVERED AND FOR HOW LONG?

1. FREE TIRE REPLACEMENT – Kelly medium radial truck tires covered by this warranty that become unserviceable due to a covered warranty condition during the first 2/32" (inch) treadwear or 12 months from date of purchase, whichever comes first, will be replaced with a comparable new Kelly medium radial truck tire without charge. You pay only for the mounting and balancing. (Without proof of purchase, date of manufacture will be used to determine eligibility.)

2. PRORATED TIRE REPLACEMENT – Tires worn beyond the first 2/32" (inch) treadwear that become unserviceable due to a covered warranty condition will be replaced on a prorated basis. You are responsible for mounting, balancing and any additional services you order at the time of adjustment, as well as any taxes and government-mandated charges.

HOW WILL THE PRORATED CHARGES BE CALCULATED?

The replacement price will be calculated by multiplying the current Kelly advertised selling price, at the adjustment location, by the percentage of usable original tread that has been worn off at the time of adjustment. You pay for mounting, balancing, an amount equal to the full current Federal Excise Tax (U.S. only) and any other applicable taxes for the comparable new Kelly replacement tire as well as any government-mandated charges.

EXAMPLE:

If your disabled tire had an original 16/32" (inch) of usable tread depth and is worn to 8/32" (inch) of usable tread remaining, you have used 50% and therefore must pay 50% of the advertised selling price of a comparable tire, plus an amount equal to the full current Federal Excise Tax (U.S. only) applicable to the comparable new replacement tire at the time of adjustment. If the price of the comparable tire is \$400.00, the cost to you would be \$200.00, plus Federal Excise Tax (U.S. only), mounting, balancing, any other applicable taxes and government-mandated charges.

$\frac{\text{Amount Of Tread Used}}{\text{Original Tread}}$	X	Value Of Comparable Tire	=	Prorated Price Of New Tire
---	---	--------------------------	---	----------------------------

(Plus FET [U.S. only], other applicable taxes, government-mandated charges and mounting and balancing.)

WHAT IS A COMPARABLE TIRE?

A “comparable” new Kelly medium radial truck tire may be either the same line of tire or, in the event that the same tire is not available, a tire of the same basic construction and quality with a different sidewall or tread configuration. If a higher-priced tire is accepted as replacement, the difference in price will be at an additional charge to you.

Any replacement tire provided pursuant to this warranty will be covered by the Kelly warranty in effect at the time of replacement.

WHAT IS NOT COVERED UNDER THIS LIMITED WARRANTY?

- Wear conditions or tire damage due to road hazards (including punctures, cuts, snags, impact breaks, etc.), wreck, collision, fire, fast wear, irregular wear, heel and toe wear or other wear conditions.
- Improper inflation, overloading, high-speed spinup, misapplication, misuse, negligence, racing, chain damage or improper mounting or demounting.
- Mechanical condition of the vehicle.
- Chip/chunk conditions on tires intended for highway service.
- Ride disturbance after the first 2/32" (inch) treadwear or due to damaged wheels or any vehicle condition.
- Any tire intentionally altered after leaving a factory producing Kelly tires to change its appearance (example: white inlay on a black tire).
- Tires with weather cracking which were purchased more than four (4) years prior to presentation for adjustment. If you have no proof of purchase date, tires manufactured four (4) or more years prior to presentation are not covered.
- Material added to a tire after leaving a factory producing Kelly tires (examples: tire fillers, sealants or balancing substances). If the added material is the cause of the tire being removed from service, the tire will not be adjusted.
- Tires removed from service due to improper repairs.
- Loss of time, inconvenience, loss of use of vehicle, incidental or consequential damage.

Note: Some states or provinces do not allow the exclusion or limitation of incidental or consequential damages, so the above limitations or exclusions may not apply to you.

This limited warranty is applicable only in the U.S. and Canada.



A Good Deal
On A Great Tire™

www.kellytires.com

WHAT IS THE RADIAL MEDIUM TRUCK TIRE CASING PROVISION?

Kelly® medium radial truck tires will be warranted for covered conditions through the first retread for a period of four (4) years from the date of the casing DOT serial number or proof of purchase if available.

If retreaded by a Goodyear Authorized Retreader, casings will be warranted for covered conditions for an unlimited number of retreads for a period of four (4) years from the date of the casing DOT serial number or proof of purchase, if available.

Casing values are based on the predetermined casing value at the time of adjustment. See your servicing Dealer for these values.

HOW DO YOU KNOW WHEN YOUR TIRES WERE MANUFACTURED?

Tires with a DOT number ending with 1811 or greater were manufactured after 05/01/2011 (1811 refers to the 1st week of May 2011). These tires are covered under the provisions of this warranty.

WHEN DOES THE WARRANTY END?

Kelly medium radial truck tires have delivered the full original tread life and the new tire coverage of this warranty ends when the treadwear indicators become visible or four (4) years from the date of original tire manufacture or new tire purchase date (whichever occurs first). Without proof of purchase, date of manufacture will be used to determine eligibility. Casings may continue to be warranted beyond the new tire coverage. Please refer to the "WHAT IS THE RADIAL MEDIUM TRUCK TIRE CASING PROVISION?" section for warranty details on casings.

HOW DO YOU OBTAIN AN ADJUSTMENT?

- A. You must present the tire to be adjusted to an authorized Kelly Commercial Tire Retailer. Please consult your telephone directory or kellytires.com/commercial for locations. Tires replaced on an adjustment basis become the property of The Goodyear Tire & Rubber Company or Goodyear Canada Inc.
- B. You must pay for taxes or any additional service you order at the time of adjustment.
- C. No claim will be recognized unless submitted on a Kelly claim form (supplied by a Kelly Commercial Tire Retailer) that is completely filled out and signed by you, the owner of the tire presented for adjustment, or your authorized agent.

WHAT ARE YOUR LEGAL RIGHTS?

This warranty gives you specific legal rights, and you may also have other rights that vary from state to state and province to province. Note: No Representative or Dealer has authority to make any representation, promise or agreement on behalf of Kelly except as stated herein.

Any tire, no matter how well constructed, may fail in service or otherwise become unserviceable due to conditions beyond the control of the manufacturer. Under no circumstances is this warranty a representation that a tire failure cannot occur.

DISCLAIMER: THIS WARRANTY IS IN LIEU OF, AND GOODYEAR HEREBY DISCLAIMS, ANY AND ALL OTHER WARRANTIES AND REPRESENTATIONS, EXPRESS OR IMPLIED, INCLUDING WITHOUT LIMITATION ANY WARRANTY OF MERCHANTABILITY OR FITNESS FOR A PARTICULAR PURPOSE, AND NO OTHER WARRANTY OR REPRESENTATION OF ANY KIND IS MADE BY GOODYEAR OR SHALL BE IMPLIED BY LAW.

LIMITATION OF DAMAGES: IN NO EVENT AND UNDER NO CIRCUMSTANCE SHALL GOODYEAR BE LIABLE TO THE BUYER FOR ANY INDIRECT, SPECIAL, INCIDENTAL, CONSEQUENTIAL, LOST PROFIT, LOSS OF BUSINESS, LOSS OF GOODWILL OR REPUTATION, PUNITIVE OR OTHER DAMAGE, COST (INCLUDING FOR REPLACEMENT TRANSPORTATION), EXPENSE OR LOSS OF ANY KIND. SOME STATES AND PROVINCES DO NOT ALLOW THE EXCLUSION OR LIMITATION OF INCIDENTAL OR CONSEQUENTIAL DAMAGES, SO THE ABOVE LIMITATION OR EXCLUSION MAY NOT APPLY TO YOU.

SAFETY WARNINGS

Property damage, serious injury or death may result from:

- **TIRE FAILURE DUE TO UNDERINFLATION/OVERLOADING/MISAPPLICATION.** Follow the vehicle owner's manual or tire placard in the vehicle.
- **TIRE FAILURE DUE TO IMPACT DAMAGE/IMPROPER MAINTENANCE.** Tires should be inspected regularly by a qualified technician for signs of damage, such as punctures or impacts.
- **TIRE FAILURE DUE TO IMPROPER REPAIRS.** See Rubber Manufacturers Association (RMA) established repair procedures at www.rma.org and/or go to www.goodyear.com/truck for information on proper repair procedures.
- **EXPLOSION OF TIRE/RIM ASSEMBLY DUE TO IMPROPER MOUNTING.** Only specially trained persons should mount tires. When mounting tires, use safety cage and clip-on extension air hose to inflate.
- **FAILURE TO MOUNT RADIAL TIRES ON APPROVED RIMS.**
- **FAILURE TO DEFLATE SINGLE OR DUAL ASSEMBLIES COMPLETELY BEFORE DEMOUNTING.**
- **TIRE SPINNING.** On slippery surfaces such as snow, mud, ice, etc., do not spin tires in excess of 35 mph (56 kph), as indicated on the speedometer.
- **EXCESSIVE WHEEL SPINNING.** This can also result in tire disintegration or axle failure.

FOR SERVICE ASSISTANCE OR INFORMATION:

1. First contact the nearest Authorized Kelly Commercial Tire Retailer.
2. If additional assistance is required:

- | | |
|--|---|
| <ul style="list-style-type: none">• In the U.S., write to –
Kelly Customer Assistance Center
Department 728
200 Innovation Way
Akron, OH 44316 | <ul style="list-style-type: none">• In Canada, write to –
Kelly Customer Assistance Center
450 Kipling Avenue
Toronto, Ont. M8Z 5E1 |
|--|---|



A Good Deal
On A Great Tire™

www.kellytires.com



COMMERCIAL TRUCK TIRES

www.kellytires.com/commercial

Engineering Data

Over-The-Road Truck Tires

MISC.
M-1 TO M-20

LOADS
L-1 TO L-14



PHOTOS
K-1 TO K-4



DIMENSIONS
K-5 TO K-8

GENERAL
I TO II

STEER, DRIVE AND TRAIL TIRES

ARMORSTEEL KLHA™



Armorsteel KLHA	11R22.5	G
Armorsteel KLHA	11R24.5	G
Armorsteel KLHA	285/75R24.5	G
Armorsteel KLHA	295/75R22.5	G

ARMORSTEEL KDA®



Armorsteel KDA	11R22.5	G
Armorsteel KDA	11R24.5	G
Armorsteel KDA	285/75R24.5	G
Armorsteel KDA	295/75R22.5	G

ARMORSTEEL KTSA®



Armorsteel KTSA	11R22.5	G
Armorsteel KTSA	11R24.5	G
Armorsteel KTSA	255/70R22.5	H
Armorsteel KTSA	285/75R24.5	G
Armorsteel KTSA	295/75R22.5	G

ALL-POSITION RIB TIRES

ARMORSTEEL KSE™



Armorsteel KSE	11R22.5	G
Armorsteel KSE	11R24.5	G
Armorsteel KSE	285/75R24.5	G
Armorsteel KSE	295/75R22.5	G

ARMORSTEEL KSR® I



Armorsteel KSR I LT	245/70R19.5	F
Armorsteel KSR I	215/75R17.5	H
Armorsteel KSR I	255/70R22.5	H

ARMORSTEEL KRP™



Armorsteel KRP	225/70R19.5	F
----------------	-------------	---

DRIVE TIRES

ARMORSTEEL KDM® I



Armorsteel KDM I	11R22.5	G
Armorsteel KDM I	11R24.5	G
Armorsteel KDM I	285/75R24.5	G
Armorsteel KDM I	295/75R22.5	G

ALL-POSITION RIB TIRES

ARMORSTEEL KRM™



Armorsteel KRM 12R22.5 H

ARMORSTEEL KRM™ I



Armorsteel KRM I 315/80R22.5 L

Armorsteel KRM I SS 385/65R22.5 J

Armorsteel KRM I SS 425/65R22.5 L



RADIAL MEDIUM TRUCK TIRES LINE HAUL SERVICE

Tire Size	Load Range	Single Load		Single Inflation		Dual Load		Dual Inflation		Weight		Rim Width	Overall Width		Overall Diameter		Static Radius		RPM	KPM	Tread Depth	Min. Dual Spacing		Speed Rating
		lbs	kg	psi	kpa	lbs	kg	psi	kpa	lbs	kg	in	in	mm	in	mm	in	mm			32nds	in	mm	
Armorsteel KLHA™																								
TUBELESS TIRES ON 15° DROP CENTERS																								
11R22.5	G	6,175	2,800	105	720	5,840	2,650	105	720	116	52	8.25	11.2	285	41.4	1,052	19.3	490	502	312	18.0	12.5	318	75
11R24.5	G	6,610	3,000	105	720	6,005	2,725	105	720	123	56	8.25	11.2	285	43.4	1,103	20.2	513	479	297	18.0	12.5	318	75
285/75R24.5	G	6,175	2,800	110	760	5,675	2,575	100	690	110	50	8.25	11.1	282	41.4	1,052	19.2	488	502	312	18.0	12.5	318	75
295/75R22.5	G	6,175	2,800	110	760	5,675	2,575	100	690	106	48	8.25	11.2	285	40.2	1,022	18.7	475	517	321	18.0	12.9	328	75
Armorsteel KDA®																								
TUBELESS TIRES ON 15° DROP CENTERS																								
11R22.5	G	6,175	2,800	105	720	5,840	2,650	105	720	127	57	8.25	10.9	277	42.0	1,067	19.5	496	497	309	28.0	12.5	318	75
11R24.5	G	6,610	3,000	105	720	6,005	2,725	105	720	135	61	8.25	10.9	277	44.1	1,121	20.5	521	473	294	28.0	12.5	318	75
285/75R24.5	G	6,175	2,800	110	760	5,675	2,575	100	690	121	55	8.25	11.0	280	42.0	1,067	19.5	496	497	309	28.0	12.5	318	75
295/75R22.5	G	6,175	2,800	110	760	5,675	2,575	100	690	116	52	8.25	11.1	282	40.8	1,037	18.9	480	512	318	28.0	12.9	328	75
Armorsteel KTSA®																								
TUBELESS TIRES ON 15° DROP CENTERS																								
11R22.5	G	6,175	2,800	105	720	5,840	2,650	105	720	112	51	8.25	10.9	277	41.1	1,044	19.1	485	502	312	13.0	12.5	318	75
11R24.5	G	6,610	3,000	105	720	6,005	2,725	105	720	117	53	8.25	10.9	277	43.1	1,095	20.0	508	478	297	13.0	12.5	318	75
255/70R22.5	H	5,510	2,500	120	830	5,070	2,300	120	830	88	40	7.50	10.0	254	36.3	922	16.9	429	568	353	13.0	11.3	287	81
285/75R24.5	G	6,175	2,800	110	760	5,675	2,575	100	690	103	47	8.25	11.0	280	40.9	1,039	19.0	483	504	313	13.0	12.5	318	75
295/75R22.5	G	6,175	2,800	110	760	5,675	2,575	100	690	100	45	8.25	11.2	285	39.8	1,011	18.5	470	518	322	13.0	12.9	328	75



RADIAL MEDIUM TRUCK TIRES REGIONAL PICK-UP AND DELIVERY SERVICE

Tire Size	Load Range	Single Load		Single Inflation		Dual Load		Dual Inflation		Weight		Rim Width	Overall Width		Overall Diameter		Static Radius		RPM	KPM	Tread Depth	Min. Dual Spacing		Speed Rating
		lbs	kg	psi	kpa	lbs	kg	psi	kpa	lbs	kg	in	in	mm	in	mm	in	mm			32nds	in	mm	
Armorsteel KDM® I																								
TUBELESS TIRES ON 15° DROP CENTERS																								
11R22.5	G	6,175	2,800	105	720	5,840	2,650	105	720	126	57	8.25	11.0	280	42.1	1,070	19.6	498	496	308	26.0	12.5	318	75
11R24.5	G	6,610	3,000	105	720	6,005	2,725	105	720	134	61	8.25	11.0	280	44.1	1,121	20.5	521	473	294	26.0	12.5	318	75
285/75R24.5	G	6,175	2,800	110	760	5,675	2,575	100	690	120	54	8.25	10.6	269	42.3	1,075	19.6	498	493	306	26.0	12.5	318	75
295/75R22.5	G	6,175	2,800	110	760	5,675	2,575	100	690	129	59	8.25	10.9	277	41.0	1,042	19.0	483	509	316	26.0	12.9	328	75
Armorsteel KSE™																								
TUBELESS TIRES ON 15° DROP CENTERS																								
11R22.5	G	6,175	2,800	105	720	5,840	2,650	105	720	112	51	8.25	10.9	277	41.2	1,047	19.1	485	500	311	16.0	12.5	318	75
11R24.5	G	6,610	3,000	105	720	6,005	2,725	105	720	120	54	8.25	10.9	277	43.2	1,098	20.1	511	477	296	16.0	12.5	318	75
285/75R24.5	G	6,175	2,800	110	760	5,675	2,575	100	690	106	48	8.25	11.0	280	41.1	1,044	19.1	485	502	312	16.0	12.5	318	75
295/75R22.5	G	6,175	2,800	110	760	5,675	2,575	100	690	103	46	8.25	11.2	285	40.1	1,019	18.6	473	514	319	16.0	12.9	328	75
Armorsteel KSR® I LT																								
TUBELESS TIRES ON 15° DROP CENTERS																								
245/70R19.5	F	4,080	1,850	95	660	3,970	1,800	95	660	69	31	7.50	9.6	244	33.0	839	15.3	389	625	388	16.0	11.0	280	75
Armorsteel KSR® I																								
TUBELESS TIRES ON 15° DROP CENTERS																								
215/75R17.5	H	4,805	2,180	125	860	4,540	2,060	125	860	62	28	6.00HC*	8.3	211	30.6	778	14.1	358	674	419	15.0	9.3	236	75
255/70R22.5	H	5,510	2,500	120	830	5,070	2,300	120	830	92	41	7.50	10.0	254	36.6	930	17.1	435	568	353	18.0	11.3	287	81
Armorsteel KRP™																								
TUBELESS TIRES ON 15° DROP CENTERS																								
225/70R19.5	F	3,640	1,650	95	660	3,415	1,550	95	660	61	27	6.75	8.8	224	32.0	813	14.8	376	644	400	15.0	10.0	254	75
Armorsteel KRM™																								
TUBELESS TIRES ON 15° DROP CENTERS																								
12R22.5	H	7,390	3,350	120	830	6,780	3,075	120	830	149	67	9.00	11.4	290	43.0	1,093	20.1	511	483	300	23.0	13.5	343	68





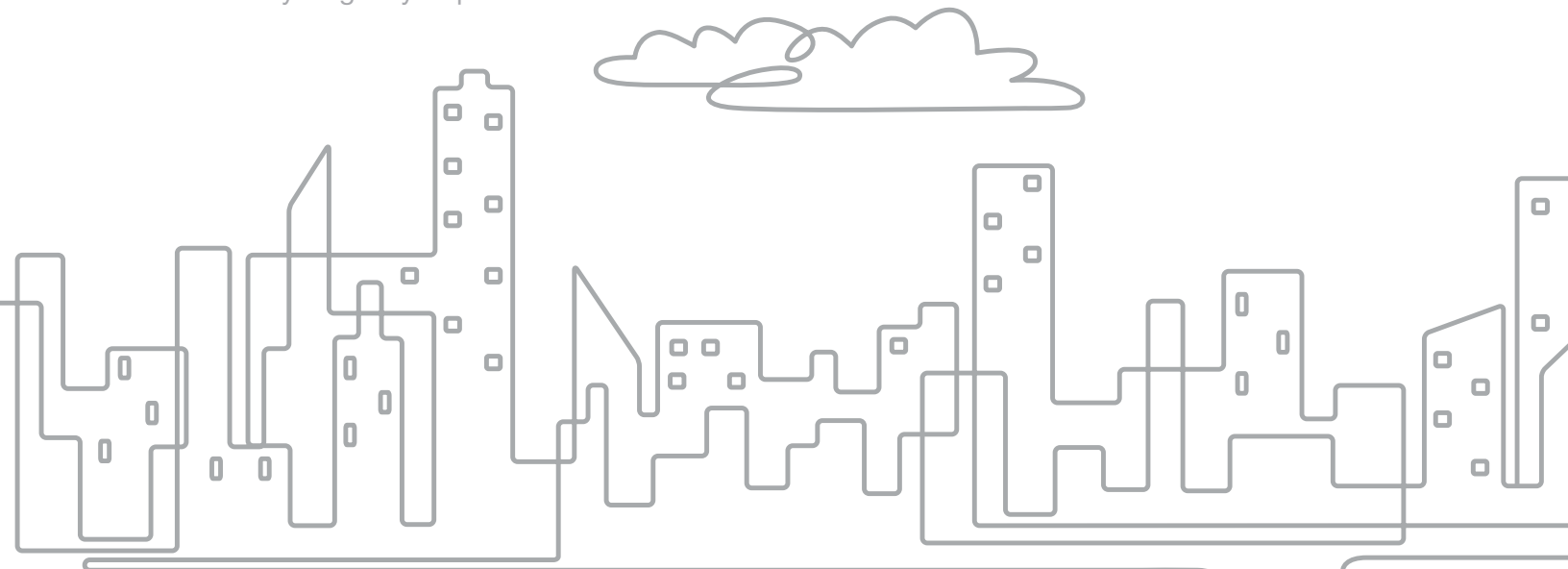
RADIAL MEDIUM TRUCK TIRES MIXED SERVICE

Tire Size	Load Range	Single Load		Single Inflation		Dual Load		Dual Inflation		Weight		Rim Width	Overall Width		Overall Diameter		Static Radius		RPM	KPM	Tread Depth	Min. Dual Spacing		Speed Rating
		lbs	kg	psi	kpa	lbs	kg	psi	kpa	lbs	kg	in	in	mm	in	mm	in	mm			32nds	in	mm	
Armorsteel KRM™ I																								
TUBELESS TIRES ON 15° DROP CENTERS																								
315/80R22.5	L	9,090	4,125	130	900	8,270	3,750	130	900	149	67	9.00	12.4	315	42.6	1,083	19.8	503	488	303	22.0	13.8	351	68
Armorsteel KRM™ I SS																								
TUBELESS TIRES ON 15° DROP CENTERS																								
385/65R22.5	J	9,370	4,250	120	830	N/A	N/A	N/A	N/A	177	80	11.75	14.9	379	42.4	1,077	19.7	501	490	304	18.0	N/A	N/A	65
425/65R22.5	L	11,400	5,150	120	830	N/A	N/A	N/A	N/A	203	92	12.25	16.1	409	44.2	1,123	20.4	518	470	292	20.0	N/A	N/A	65



Kelly® Commercial Truck Tires

With a heritage of value, performance and dependability, Kelly commercial tires have represented A Good Deal On A Great Tire! The same applies today – Kelly tires can deliver great tread life and performance. Kelly casings can be retreaded multiple times for additional miles of service and have a wide range of KRH® Regional/All-Position and KDM® 1 Regional Drive sizes to help get you where you want to go. Kelly commercial tires are also backed by a nationwide limited warranty to give you peace of mind and confidence.



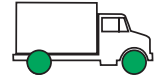
KRH
Regional/All-Position

KDM 1
Regional Drive





KRH® All-Position Rib Tire

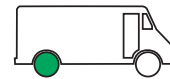


- Deep 20/32" tread helps provide long original tread life.
- Tread pattern enhances traction on wet and dry roads.
- Belt package offers even wear with less scrub.
- Rib pattern helps promote uniform wear.

Tire Size	Load Range	Single Load		Single Inflation		Dual Load		Dual Inflation		Weight		Rim Width		Overall Width		Overall Diameter		Static Radius		RPM	RPK	Tread Depth		Min. Dual Spacing		Speed Rating
		lbs	kg	psi	kpa	lbs	kg	psi	kpa	lbs	kg	in	in	mm	in	mm	in	mm	in			mm	32nds	in	mm	
TUBELESS TIRES ON 15" DROP CENTER RIMS																										
11R22.5	H	6,610	3,000	120	830	6,005	2,725	120	830	124	56	8.25	10.9	277	41.5	1,054	19.4	493	501	311	20	12.5	318	75		
295/75R22.5	G	6,175	2,800	110	760	5,675	2,575	100	760	115	52	8.25	11.1	282	40.5	1,026	18.9	480	514	319	20	12.9	328	75		
11R24.5	H	7,160	3,250	120	830	6,610	3,000	120	830	132	60	8.25	11.0	279	43.6	1,105	20.3	516	478	297	20	12.5	318	75		



KDM® I Drive Tire



- Aggressive tread design and deep tread depth help provide even treadwear.
- Isolated-element tread pattern helps promote excellent traction.
- Unique blading pattern enhances the performance and appearance as the tire begins to wear.
- Tread radius helps distribute pressure evenly over the footprint for uniform treadwear and long tread life.
- All-steel casing and belts enhance toughness and help increase casing life.

Tire Size	Load Range	Single Load		Single Inflation		Dual Load		Dual Inflation		Weight		Rim Width		Overall Width		Overall Diameter		Static Radius		RPM	RPK	Tread Depth		Min. Dual Spacing		Speed Rating
		lbs	kg	psi	kpa	lbs	kg	psi	kpa	lbs	kg	in	in	mm	in	mm	in	mm	in			mm	32nds	in	mm	
TUBELESS TIRES ON 15" DROP CENTER RIMS																										
11R22.5	H	6,610	3,000	120	830	6,005	2,725	120	830	131	59	8.25	11.0	279	42.1	1,069	19.6	498	496	308	26	12.5	318	75		
295/75R22.5	G	6,175	2,800	110	760	5,675	2,575	100	690	123	56	8.25	10.9	277	41.0	1,041	19.0	483	509	316	26	12.9	328	75		
11R24.5	H	7,160	3,250	120	830	6,610	3,000	120	830	139	63	8.25	11.1	279	44.2	1,120	20.5	521	473	294	26	12.5	318	75		



A Good Deal
On A Great Tire™

www.kellytires.com

KELLY[®]

ARMORSTEEL MSA & ARMORSTEEL MSD



MIXED SERVICE TIRES FOR ALL-AROUND
ON- AND OFF-ROAD PERFORMANCE



The Kelly Armorsteel MSA and Armorsteel MSD offer toughness to help your fleet get the job done. Both tires offer durable tread compounds and casings that help resist cuts, punctures and excessive wear, and help minimize downtime. This strength results in a long original tread life plus retreadability.

KELLY  **TIRES**[™]

ON- AND OFF-ROAD PERFORMANCE



Armorsteel MSA

Mixed-Service All-Position Tire
For On- And Off-Road



- **Optimized tread compound** helps resist cuts and chips for enhanced toughness, long original tread life and retreadability
- **Enhanced casing construction** helps resist cuts and punctures to promote casing toughness
- **Tread groove stone ejectors** help prevent stone trapping and drilling to enhance casing toughness and retreadability
- **Four steel-belt package** enhances retreadability

Tire Size	Load Range	Single Load		Single Inflation		Dual Load		Dual Inflation		Weight		Rim Width		Overall Width		Overall Diameter		Static Radius		RPM	RPK	Tread Depth 32nds	Min. Dual Spacing		Speed Rating
		lbs	kg	psi	kpa	lbs	kg	psi	kpa	lbs	kg	in	mm	in	mm	in	mm	in	mm						
TUBELESS TIRES ON 15" DROP CENTER RIMS																									
11R22.5	H	6,610	3,000	120	830	6,005	2,725	120	830	110	50	8.25	11.0	279	41.5	1,054	19.2	488	501	311	20	12.5	318	68	
11R24.5	H	7,160	3,250	120	830	6,610	3,000	120	830	118	53	8.25	11.2	284	43.5	1,105	20.3	516	478	297	20	12.5	318	68	



Armorsteel MSD

Special Service Drive Tire Designed Primarily For Off-Road Service Combined With Heavy On-Road Use



- **Aggressive tread pattern** with wide lateral grooves improves off-road traction
- **Deep tread** helps provide increased mileage and long wear
- **Specialized tread compound** helps increase treadwear without sacrificing resistance to cuts and abrasions
- **Shoulder tie bars** add stability to improve handling and help prevent irregular wear

Tire Size	Load Range	Single Load		Single Inflation		Dual Load		Dual Inflation		Weight		Rim Width		Overall Width		Overall Diameter		Static Radius		RPM	RPK	Tread Depth 32nds	Min. Dual Spacing		Speed Rating
		lbs	kg	psi	kpa	lbs	kg	psi	kpa	lbs	kg	in	mm	in	mm	in	mm	in	mm						
TUBELESS TIRES ON 15" DROP CENTER RIMS																									
11R22.5	H	6610	3000	120	830	6005	2725	120	830	141	64	8.25	10.9	277	42.0	1067	19.8	503	497	309	28	12.5	318	75	
11R24.5	H	7160	3250	120	830	6610	3000	120	830	150	68	8.25	10.9	277	44.0	1118	20.8	528	474	295	28	12.5	318	75	

www.kellytires.com/truck

KELLY TIRES™

KELLY[®] ARMORSTEEL LHS[™], LHD & LHT

SmartWay[®]
Verified 

SmartWay[®]
Verified 

SmartWay[®]
Verified 



FUEL EFFICIENCY AND LONG MILES TO REMOVAL



The Kelly Armorsteel LHS, LHD and LHT offer a low cost per mile by balancing fuel efficiency and SmartWay verification with long miles to removal. Better yet, their casings can be retreaded multiple times for even more miles of service. They're also backed by a nationwide limited warranty, so you can choose Kelly Armorsteel long haul tires with confidence.



SmartWay
Verified

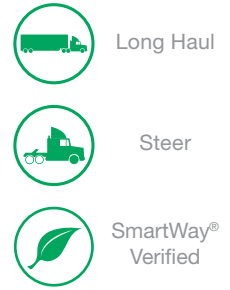
KELLY  TIRES[™]

OFFERING FLEETS A LOW COST PER MILE



Armorsteel LHS™ Long Haul Steer Tire Offering Enhanced Fuel Efficiency And Long Miles To Removal

- **Uniquely shaped pressure distribution groove** helps minimize shoulder wear for many miles to removal
- **Barrel-shaped footprint, edge blades and five-rib design** offer even wear, many miles to removal and a low cost per mile
- **The evolving tread pattern** encourages uniform wear and exposes angled grooves as the tire wears to enhance traction and handling

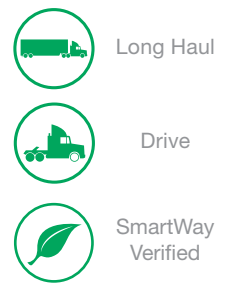


Tire Size	Load Range	Single Load		Single Inflation		Dual Load		Dual Inflation		Weight		Rim Width		Overall Width		Overall Diameter		Static Radius		RPM	RPK	Tread Depth	Min. Dual Spacing		Speed Rating
		lbs	kg	psi	kpa	lbs	kg	psi	kpa	lbs	kg	in	in	mm	in	mm	in	mm	32nds			in	mm		
TUBELESS TIRES ON 15" DROP CENTER RIMS																									
11R22.5	G	6,175	2,800	105	720	5,840	2,650	105	720	109.7	49.8	8.25	10.8	274	41.6	1,057	19.3	490	499	310	18	12.5	318	75	
295/75R22.5	G	6,175	2,800	110	760	6,175	2,575	110	760	107.8	48.9	8.25	11.1	282	40.5	1,029	18.9	480	513	319	18	12.9	328	75	
11R24.5	G	6,610	3,000	105	720	6,005	2,725	105	720	118.2	53.7	8.25	11.0	279	44.3	1,125	20.6	523	469	291	18	12.5	318	75	
285/75R24.5	G	6,175	2,800	110	760	5,675	2,575	110	760	112.6	51.1	8.25	11.1	282	41.6	1,057	19.4	493	499	310	18	12.5	318	75	



Armorsteel LHD Long Haul Drive Tire Offering Enhanced Fuel Efficiency And Long Miles To Removal

- **26/32" tread depth** balances fuel economy and mileage
- **Large, stable blocks** help enhance fuel efficiency and even wear
- **Four-belt construction** helps enhance toughness and tire life
- **Circumferential and lateral grooves** help deliver all-season traction
- **Closed shoulder design** helps promote uniform wear throughout the life of the tire

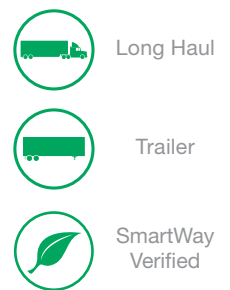


Tire Size	Load Range	Single Load		Single Inflation		Dual Load		Dual Inflation		Weight		Rim Width		Overall Width		Overall Diameter		Static Radius		RPM	RPK	Tread Depth	Min. Dual Spacing		Speed Rating
		lbs	kg	psi	kpa	lbs	kg	psi	kpa	lbs	kg	in	in	mm	in	mm	in	mm	32nds			in	mm		
TUBELESS TIRES ON 15" DROP CENTER RIMS																									
295/75R22.5	G	6,175	2,800	110	760	5,675	2,575	110	760	118.2	53.7	8.25	11.1	282	40.9	1,039	19.3	490	510	317	26	12.9	328	75	



Armorsteel LHT Long Haul Trailer Tire Offering Enhanced Fuel Efficiency And Long Miles To Removal

- **Mono-groove tread design** helps promote even wear and helps evacuate water from the tread for enhanced wet traction
- **Unique center groove design** helps resist stone drilling and cracking
- **Low tread void** helps provide long mileage, enhanced braking and even wear
- **Decoupling groove** helps minimize shoulder wear for many miles to removal

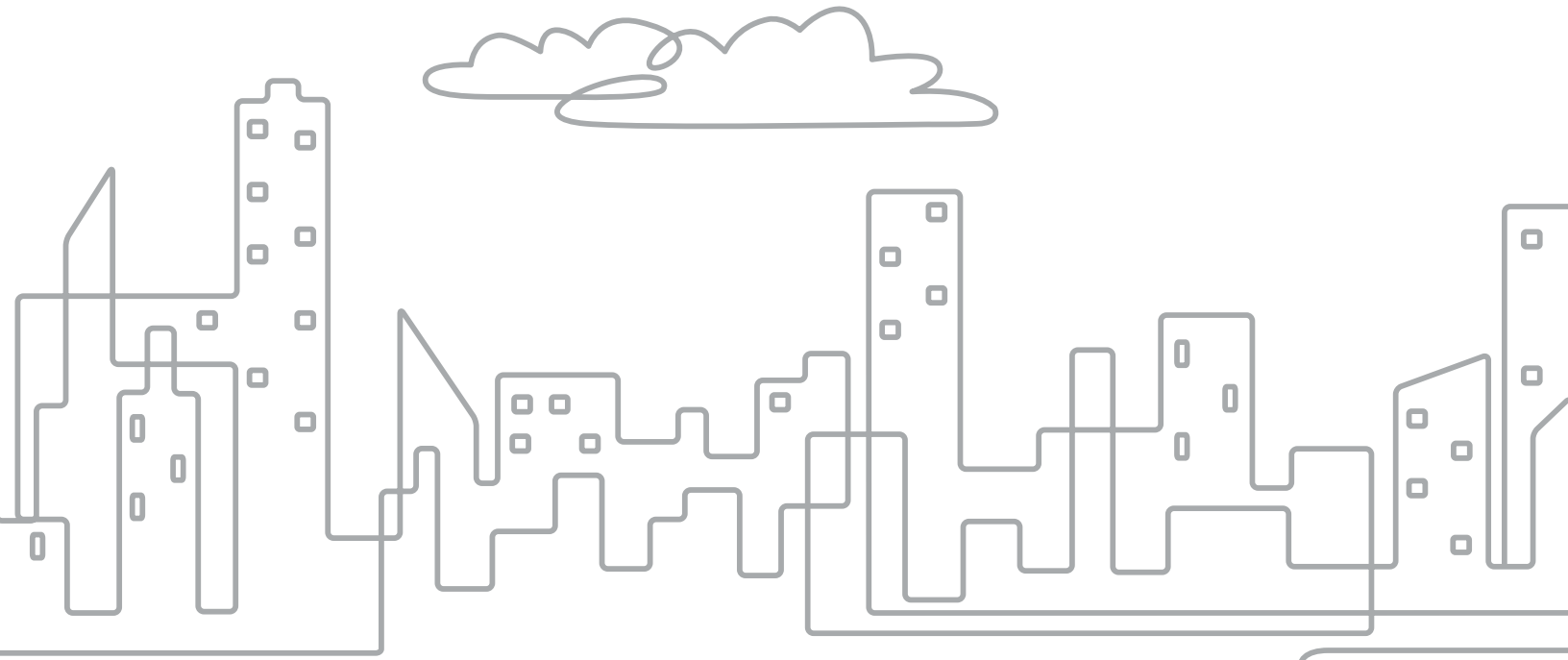


Tire Size	Load Range	Single Load		Single Inflation		Dual Load		Dual Inflation		Weight		Rim Width		Overall Width		Overall Diameter		Static Radius		RPM	RPK	Tread Depth	Min. Dual Spacing		Speed Rating
		lbs	kg	psi	kpa	lbs	kg	psi	kpa	lbs	kg	in	in	mm	in	mm	in	mm	32nds			in	mm		
TUBELESS TIRES ON 15" DROP CENTER RIMS																									
11R22.5	G	6,175	2,800	105	720	5,840	2,650	105	720	103.1	46.8	8.25	10.9	277	41.3	1,049	19.2	488	499	310	13	12.5	318	75	
295/75R22.5	G	6,175	2,800	110	760	5,675	2,575	110	760	98.2	44.6	8.25	11.1	282	40.0	1,016	18.7	475	515	320	13	12.9	328	75	
11R24.5	G	6,610	3,000	105	720	6,005	2,725	105	720	113.5	51.5	8.25	11.0	279	43.3	1,100	20.2	513	476	296	13	12.5	318	75	
285/75R22.5	G	6,175	2,800	110	760	5,675	2,575	110	760	104.6	47.5	8.25	11.1	282	41.3	1,049	19.3	490	499	310	13	12.5	318	75	

www.kellytires.com/truck



Kelly[®] Commercial Truck Tires



A Good Deal
On A Great Tire[™]

A Good Deal On A Great Tire™ is an accurate description of Kelly® commercial truck tires. The value of the Kelly brand is evident in the miles of original tread life and tough casings that can usually be retreaded multiple times for additional miles of service. Kelly commercial tires are also backed by a nationwide limited warranty* and are available for all types of commercial applications. You can find these popular commercial tires at Kelly Dealers and many truck stops across the country.

Size/Type Chart

Long Haul				
Kelly Product Line	Armorsteel LHS™ Page 3	KDA® Page 3	Armorsteel LHD Page 4	Armorsteel LHT Page 4
11R22.5	G	G		G
295/75R22.5	G	G	G	G
11R24.5	G	G		G
285/75R24.5	G	G		G
Regional				
Kelly Product Line	KDM® I Page 5	Kelly KRH® Page 5	Armorsteel RSA ULT Page 6	Armorsteel RSD ULT Page 6
225/70R19.5			G	G
245/70R19.5			G	G
11R22.5	H	H		
295/75R22.5	G	G		
11R24.5	H	H		
Mixed Service				
Kelly Product Line	Armorsteel MSA Page 7	Armorsteel MSD Page 7		
11R22.5	H	H		
11R24.5	H	H		

NOTE: The letters in the chart represent load ranges.

*See pages 10–11 for more details.

LONG HAUL TIRES

SmartWay®
Verified

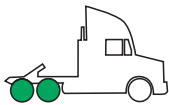


Armorsteel® LHS™

Long Haul Steer Tire Offering Enhanced Fuel Efficiency and Long Miles to Removal

- Uniquely shaped pressure distribution groove helps minimize shoulder wear for many miles to removal
- Barrel-shaped footprint, edge blades and five-rib design offer even wear, many miles to removal and a low cost per mile
- The evolving tread pattern encourages uniform wear and exposes angled grooves as the tire wears to enhance traction and handling

Tire Size	Load Range	Single Load		Single Inflation		Dual Load		Dual Inflation		Weight		Rim Width		Overall Width		Overall Diameter		Static Radius		RPM	RPK	Tread Depth		Min. Dual Spacing		Speed Rating
		lbs	kg	psi	kpa	lbs	kg	psi	kpa	lbs	kg	in	mm	in	mm	in	mm	in	mm			32nds	in	mm		
TUBELESS TIRES ON 15" DROP CENTER RIMS																										
11R22.5	G	6,175	2,800	105	720	5,840	2,650	105	720	109.7	49.8	8.25	10.8	274	41.6	1,057	19.3	490	499	310	18	12.5	318	75		
295/75R22.5	G	6,175	2,800	110	760	6,175	2,575	110	760	107.8	48.9	8.25	11.1	282	40.5	1,029	18.9	480	513	319	18	12.9	328	75		
11R24.5	G	6,610	3,000	105	720	6,005	2,725	105	720	118.2	53.7	8.25	11.0	279	44.3	1,125	20.6	523	469	291	18	12.5	318	75		
285/75R24.5	G	6,175	2,800	110	760	5,675	2,575	110	760	112.6	51.1	8.25	11.1	282	41.6	1,057	19.4	493	499	310	18	12.5	318	75		



KDA®

Long Haul Drive Tire Offering A Tough Casing And Many Miles To Removal

- Unique shoulder design helps promote traction and uniform treadwear
- Deep 28/32" tread depth helps provide long original tread life
- Tread radius helps distribute pressure evenly over the footprint for uniform treadwear and long tread life
- Stone ejectors help resist casing damage
- Unique blading pattern enhances the performance and appearance as the tire begins to wear
- All-steel casing and belts enhance toughness and help increase casing life

Tire Size	Load Range	Single Load		Single Inflation		Dual Load		Dual Inflation		Weight		Rim Width		Overall Width		Overall Diameter		Static Radius		RPM	RPK	Tread Depth		Min. Dual Spacing		Speed Rating
		lbs	kg	psi	kpa	lbs	kg	psi	kpa	lbs	kg	in	mm	in	mm	in	mm	in	mm			32nds	in	mm		
TUBELESS TIRES ON 15" DROP CENTER RIMS																										
11R22.5	G	6,175	2,800	105	720	5,840	2,650	105	720	125	57	8.25	10.9	277	42.0	1,067	19.5	495	497	309	28	12.5	318	75		
295/75R22.5	G	6,175	2,800	110	760	5,675	2,575	100	690	123	56	8.25	11.1	282	40.8	1,036	18.9	480	512	318	28	12.9	328	75		
11R24.5	G	6,610	3,000	105	720	6,005	2,725	105	720	133	61	8.25	10.9	277	44.1	1,120	20.5	521	473	294	28	12.5	318	75		
285/75R24.5	G	6,175	2,800	110	760	5,675	2,575	100	690	124	56	8.25	11.0	279	42.0	1,067	19.5	495	496	308	28	12.5	318	75		

LONG HAUL TIRES

SmartWay®
Verified



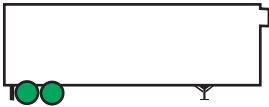
Armorsteel LHD

Long Haul Drive Tire Offering Enhanced Fuel Efficiency and Long Miles to Removal

- 26/32" tread depth balances fuel economy and mileage
- Large, stable blocks help enhance fuel efficiency and even wear
- Four-belt construction helps enhance toughness and tire life
- Circumferential and lateral grooves help deliver all-season traction
- Closed shoulder design helps promote uniform wear throughout the life of the tire

Tire Size	Load Range	Single Load		Single Inflation		Dual Load		Dual Inflation		Weight		Rim Width		Overall Width		Overall Diameter		Static Radius		RPM	RPK	Tread Depth	Min. Dual Spacing		Speed Rating
		lbs	kg	psi	kpa	lbs	kg	psi	kpa	lbs	kg	in	in	mm	in	mm	in	mm	32nds			in	mm		
TUBELESS TIRES ON 15" DROP CENTER RIMS																									
295/75R22.5	G	6,175	2,800	110	760	5,675	2,575	110	760	118.2	53.7	8.25	11.1	282	40.9	1,039	19.3	490	510	317	26	12.9	328	75	

SmartWay
Verified



Armorsteel LHT

Long Haul Trailer Tire Offering Enhanced Fuel Efficiency and Long Miles to Removal

- Mono-groove tread design helps promote even wear and helps evacuate water from the tread for enhanced wet traction
- Unique center groove design helps resist stone drilling and cracking
- Low tread void helps provide long mileage, enhanced braking and even wear
- Decoupling groove helps minimize shoulder wear for many miles to removal

Tire Size	Load Range	Single Load		Single Inflation		Dual Load		Dual Inflation		Weight		Rim Width		Overall Width		Overall Diameter		Static Radius		RPM	RPK	Tread Depth	Min. Dual Spacing		Speed Rating
		lbs	kg	psi	kpa	lbs	kg	psi	kpa	lbs	kg	in	in	mm	in	mm	in	mm	32nds			in	mm		
TUBELESS TIRES ON 15" DROP CENTER RIMS																									
11R22.5	G	6,175	2,800	105	720	5,840	2,650	105	720	103.1	46.8	8.25	10.9	277	41.3	1,049	19.2	488	499	310	13	12.5	318	75	
295/75R22.5	G	6,175	2,800	110	760	5,675	2,575	110	760	98.2	44.6	8.25	11.1	282	40.0	1,016	18.7	475	515	320	13	12.9	328	75	
11R24.5	G	6,610	3,000	105	720	6,005	2,725	105	720	113.5	51.5	8.25	11.0	279	43.3	1,100	20.2	513	476	296	13	12.5	318	75	
285/75R22.5	G	6,175	2,800	110	760	5,675	2,575	110	760	104.6	47.5	8.25	11.1	282	41.3	1,049	19.3	490	499	310	13	12.5	318	75	

REGIONAL TIRES

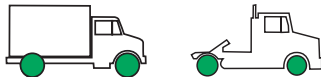


KDM® I

Regional Drive Tire Offering A Long Tread Life And Tough Casing

- Aggressive tread design and deep tread depth help provide even treadwear
- Isolated-element tread pattern helps promote excellent traction
- Unique blading pattern enhances the performance and appearance as the tire begins to wear
- Tread radius helps distribute pressure evenly over the footprint for uniform treadwear and long tread life
- All-steel casing and belts enhance toughness and help increase casing life

Tire Size	Load Range	Single Load		Single Inflation		Dual Load		Dual Inflation		Weight		Rim Width		Overall Width		Overall Diameter		Static Radius		RPM	RPK	Tread Depth		Min. Dual Spacing		Speed Rating
		lbs	kg	psi	kpa	lbs	kg	psi	kpa	lbs	kg	in	in	mm	in	mm	in	mm	in			mm	32nds	in	mm	
TUBELESS TIRES ON 15" DROP CENTER RIMS																										
11R22.5	H	6,610	3,000	120	830	6,005	2,725	120	830	131	59	8.25	11.0	279	42.1	1,069	19.6	496	496	308	26	12.5	318	75		
295/75R22.5	G	6,175	2,800	110	760	5,675	2,575	100	690	123	56	8.25	10.9	277	41.0	1,041	19.0	483	509	316	26	12.9	328	75		
11R24.5	H	7,160	3,250	120	830	6,610	3,000	120	830	139	63	8.25	11.1	279	44.2	1,120	20.5	521	473	294	26	12.5	318	75		



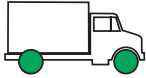
Kelly KRH®

All-Position Regional Tire Offering A Long Tread Life

- Deep 20/32" tread helps provide long original tread life
- Tread pattern enhances traction on wet and dry roads
- Belt package offers even wear with less scrub
- Rib pattern helps promote uniform wear

Tire Size	Load Range	Single Load		Single Inflation		Dual Load		Dual Inflation		Weight		Rim Width		Overall Width		Overall Diameter		Static Radius		RPM	RPK	Tread Depth		Min. Dual Spacing		Speed Rating
		lbs	kg	psi	kpa	lbs	kg	psi	kpa	lbs	kg	in	in	mm	in	mm	in	mm	in			mm	32nds	in	mm	
TUBELESS TIRES ON 15" DROP CENTER RIMS																										
11R22.5	H	6,610	3,000	120	830	6,005	2,725	120	830	124	56	8.25	10.9	277	41.5	1,054	19.4	493	501	311	20	12.5	318	75		
295/75R22.5	G	6,175	2,800	110	760	5,675	2,575	100	760	115	52	8.25	11.1	282	40.5	1,026	18.9	480	514	319	20	12.9	328	75		
11R24.5	H	7,160	3,250	120	830	6,610	3,000	120	830	132	60	8.25	11.0	279	43.6	1,105	20.3	516	478	297	20	12.5	318	75		

URBAN/CITY SERVICE TIRES

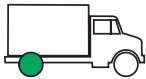


Armorsteel RSA ULT

All-Position Urban Service Tire For Toughness And Enhanced Miles To Removal

- Deep tread depth helps provide more miles to removal
- Stone ejectors in grooves help provide cut and puncture resistance for enhanced toughness and longer casing life
- Rugged casing design helps provide consistent footprint and even wear
- Enhanced shoulder rib helps provide scrub resistance and protects from abrasions from curbing

Tire Size	Load Range	Single Load		Single Inflation		Dual Load		Dual Inflation		Weight		Rim Width		Overall Width		Overall Diameter		Static Radius		RPM	RPK	Tread Depth	Min. Dual Spacing		Speed Rating
		lbs	kg	psi	kpa	lbs	kg	psi	kpa	lbs	kg	in	in	mm	in	mm	in	mm	32nds			in	mm		
TUBELESS TIRES ON 15" DROP CENTER RIMS																									
225/70R19.5	G	3,970	1,800	110	760	3,750	1,700	110	760	62	28	6.75	8.9	226	32.3	820	15.1	384	638	397	16	10.0	254	75	
245/70R19.5	G	4,540	2,060	110	760	4,410	2,000	110	760	71	32	6.75	9.6	244	33.4	848	15.5	394	617	383	16	10.7	272	75	



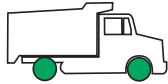
Armorsteel RSD ULT

Urban Drive Tire For Extra Traction, Toughness And Enhanced Service Life

- Traction block tread design helps provide high drive-wheel efficiency
- More than 400 molded biting edges in the tread help enhance traction on wet roads
- Tough tread compounds help resist excessive wear, chunking, cracking and chipping
- Construction helps promote toughness and retreadability for consistent service

Tire Size	Load Range	Single Load		Single Inflation		Dual Load		Dual Inflation		Weight		Rim Width		Overall Width		Overall Diameter		Static Radius		RPM	RPK	Tread Depth	Min. Dual Spacing		Speed Rating
		lbs	kg	psi	kpa	lbs	kg	psi	kpa	lbs	kg	in	in	mm	in	mm	in	mm	32nds			in	mm		
TUBELESS TIRES ON 15" DROP CENTER RIMS																									
225/70R19.5	G	3,970	1,800	110	760	3,750	1,700	110	760	64	29	6.75	8.9	226	32.4	824	15.1	384	641	398	19	10.0	254	75	
245/70R19.5	G	4,540	2,060	110	760	4,410	2,000	110	760	71	32	7.50	10.2	259	33.2	845	15.5	394	626	389	20	11.0	280	75	

MIXED SERVICE TIRES

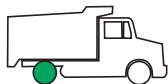


Armorsteel MSA

All-Position Mixed Service Tire For On And Off The Road

- Optimized tread compound helps resist cuts and chips for enhanced toughness, long original tread life and retreadability
- Enhanced casing construction helps resist cuts and punctures to promote casing toughness
- Tread groove stone ejectors help prevent stone trapping and drilling to enhance casing toughness and retreadability
- Four steel-belt package enhances retreadability

Tire Size	Load Range	Single Load		Single Inflation		Dual Load		Dual Inflation		Weight		Rim Width		Overall Width		Overall Diameter		Static Radius		RPM	RPK	Tread Depth 32nds	Min. Dual Spacing		Speed Rating
		lbs	kg	psi	kpa	lbs	kg	psi	kpa	lbs	kg	in	in	mm	in	mm	in	mm	in				mm		
TUBELESS TIRES ON 15" DROP CENTER RIMS																									
11R22.5	H	6,610	3,000	120	830	6,005	2,725	120	830	110	50	8.25	11.0	279	41.5	1,054	19.2	488	501	311	20	12.5	318	68	
11R24.5	H	7,160	3,250	120	830	6,610	3,000	120	830	118	53	8.25	11.2	284	43.5	1,105	20.3	516	478	297	20	12.5	318	68	



Armorsteel MSD

Special Service Drive Tire Designed Primarily For Off-Road Service Combined With Heavy On-Road Use

- Aggressive tread pattern with wide lateral grooves improves off-road traction
- Deep tread helps provide increased mileage and long wear
- Specialized tread compound helps increase treadwear without sacrificing resistance to cuts and abrasions
- Shoulder tie bars add stability to improve handling and help prevent irregular wear

Tire Size	Load Range	Single Load		Single Inflation		Dual Load		Dual Inflation		Weight		Rim Width		Overall Width		Overall Diameter		Static Radius		RPM	RPK	Tread Depth 32nds	Min. Dual Spacing		Speed Rating
		lbs	kg	psi	kpa	lbs	kg	psi	kpa	lbs	kg	in	in	mm	in	mm	in	mm	in				mm		
TUBELESS TIRES ON 15" DROP CENTER RIMS																									
11R22.5	H	6610	3000	120	830	6005	2725	120	830	141	64	8.25	10.9	277	42.0	1067	19.8	503	497	309	28	12.5	318	75	
11R24.5	H	7160	3250	120	830	6610	3000	120	830	150	68	8.25	10.9	277	44.0	1118	20.8	528	474	295	28	12.5	318	75	

LIMITED WARRANTY

United States and Canada

WHO IS ELIGIBLE FOR WARRANTY COVERAGE?

You are eligible for the benefits of this limited warranty if you meet all of the following criteria:

- You are the owner or authorized agent of the owner of new Kelly® medium radial truck tires.
- Your tires bear Department of Transportation (DOT) prescribed tire identification numbers and are not branded “NA” (Not Adjustable).
- Your Kelly medium radial truck tires have been used only on the vehicle on which they were originally installed according to the vehicle manufacturer’s or Kelly’s recommendations.
- Your tires were purchased on or after January 1, 2013.

WHAT IS COVERED AND FOR HOW LONG?

1. FREE TIRE REPLACEMENT – Kelly medium radial truck tires covered by this warranty that become unserviceable due to a covered warranty condition during the first 2/32" (inch) treadwear or 12 months from date of purchase, whichever comes first, will be replaced with a comparable new Kelly medium radial truck tire without charge. You pay only for the mounting and balancing. (Without proof of purchase, date of manufacture will be used to determine eligibility.)

2. PRORATED TIRE REPLACEMENT – Tires worn beyond the first 2/32" (inch) treadwear that become unserviceable due to a covered warranty condition will be replaced on a prorated basis. You are responsible for mounting, balancing and any additional services you order at the time of adjustment, as well as any taxes and government-mandated charges.

HOW WILL THE PRORATED CHARGES BE CALCULATED?

The replacement price will be calculated by multiplying the current Kelly advertised selling price, at the adjustment location, by the percentage of usable original tread that has been worn off at the time of adjustment. You pay for mounting, balancing, an amount equal to the full current Federal Excise Tax (U.S. only) and any other applicable taxes for the comparable new Kelly replacement tire as well as any government-mandated charges.

EXAMPLE:

If your disabled tire had an original 16/32" (inch) of usable tread depth and is worn to 8/32" (inch) of usable tread remaining, you have used 50% and therefore must pay 50% of the advertised selling price of a comparable tire, plus an amount equal to the full current Federal Excise Tax (U.S. only) applicable to the comparable new replacement tire at the time of adjustment. If the price of the comparable tire is \$400.00, the cost to you would be \$200.00, plus Federal Excise Tax (U.S. only), mounting, balancing, any other applicable taxes and government-mandated charges.

$\frac{\text{Amount Of Tread Used}}{\text{Original Tread}}$	X	Value Of Comparable Tire	=	Prorated Price Of New Tire
---	---	--------------------------	---	----------------------------

(Plus FET [U.S. only], other applicable taxes, government-mandated charges and mounting and balancing.)

WHAT IS A COMPARABLE TIRE?

A “comparable” new Kelly medium radial truck tire may be either the same line of tire or, in the event that the same tire is not available, a tire of the same basic construction and quality with a different sidewall or tread configuration. If a higher-priced tire is accepted as replacement, the difference in price will be at an additional charge to you.

Any replacement tire provided pursuant to this warranty will be covered by the Kelly warranty in effect at the time of replacement.

WHAT IS NOT COVERED UNDER THIS LIMITED WARRANTY?

- Wear conditions or tire damage due to road hazards (including punctures, cuts, snags, impact breaks, etc.), wreck, collision, fire, fast wear, irregular wear, heel and toe wear or other wear conditions.
- Improper inflation, overloading, high-speed spinup, misapplication, misuse, negligence, racing, chain damage or improper mounting or demounting.
- Mechanical condition of the vehicle.
- Chip/chunk conditions on tires intended for highway service.
- Ride disturbance after the first 2/32" (inch) treadwear or due to damaged wheels or any vehicle condition.
- Any tire intentionally altered after leaving a factory producing Kelly tires to change its appearance (example: white inlay on a black tire).
- Tires with weather cracking which were purchased more than four (4) years prior to presentation for adjustment. If you have no proof of purchase date, tires manufactured four (4) or more years prior to presentation are not covered.
- Material added to a tire after leaving a factory producing Kelly tires (examples: tire fillers, sealants or balancing substances). If the added material is the cause of the tire being removed from service, the tire will not be adjusted.
- Tires removed from service due to improper repairs.
- Loss of time, inconvenience, loss of use of vehicle, incidental or consequential damage.

Note: Some states or provinces do not allow the exclusion or limitation of incidental or consequential damages, so the above limitations or exclusions may not apply to you.

This limited warranty is applicable only in the U.S. and Canada.

WHAT IS THE RADIAL MEDIUM TRUCK TIRE CASING PROVISION?

Kelly medium radial truck tires will be warranted for covered conditions through the first retread for a period of four (4) years from the date of the casing DOT serial number or proof of purchase if available. If retreaded by a Goodyear® Authorized Retreader, casings will be warranted for covered conditions for an unlimited number of retreads for a period of four (4) years from the date of the casing DOT serial number or proof of purchase, if available. Casing values are based on the predetermined casing value at the time of adjustment. See your servicing Dealer for these values.

HOW DO YOU KNOW WHEN YOUR TIRES WERE MANUFACTURED?

Tires with a DOT number ending with 1811 or greater were manufactured after 05/01/2011 (1811 refers to the 1st week of May 2011). These tires are covered under the provisions of this warranty.

WHEN DOES THE WARRANTY END?

Kelly medium radial truck tires have delivered the full original tread life and the new tire coverage of this warranty ends when the treadwear indicators become visible or four (4) years from the date of original tire manufacture or new tire purchase date (whichever occurs first). Without proof of purchase, date of manufacture will be used to determine eligibility. Casings may continue to be warranted beyond the new tire coverage. Please refer to the “WHAT IS THE RADIAL MEDIUM TRUCK TIRE CASING PROVISION?” section for warranty details on casings.

HOW DO YOU OBTAIN AN ADJUSTMENT?

- A. You must present the tire to be adjusted to an authorized Kelly Commercial Tire Retailer. Please consult your telephone directory or kellytires.com/truck for locations. Tires replaced on an adjustment basis become the property of The Goodyear Tire & Rubber Company or Goodyear Canada Inc.
- B. You must pay for taxes or any additional service you order at the time of adjustment.
- C. No claim will be recognized unless submitted on a Kelly claim form (supplied by a Kelly Commercial Tire Retailer) that is completely filled out and signed by you, the owner of the tire presented for adjustment, or your authorized agent.

WHAT ARE YOUR LEGAL RIGHTS?

This warranty gives you specific legal rights, and you may also have other rights that vary from state to state and province to province. Note: No Representative or Dealer has authority to make any representation, promise or agreement on behalf of Kelly except as stated herein.

Any tire, no matter how well constructed, may fail in service or otherwise become unserviceable due to conditions beyond the control of the manufacturer. Under no circumstances is this warranty a representation that a tire failure cannot occur.

DISCLAIMER: THIS WARRANTY IS IN LIEU OF, AND GOODYEAR HEREBY DISCLAIMS, ANY AND ALL OTHER WARRANTIES AND REPRESENTATIONS, EXPRESS OR IMPLIED, INCLUDING WITHOUT LIMITATION ANY WARRANTY OF MERCHANTABILITY OR FITNESS FOR A PARTICULAR PURPOSE, AND NO OTHER WARRANTY OR REPRESENTATION OF ANY KIND IS MADE BY GOODYEAR OR SHALL BE IMPLIED BY LAW.

LIMITATION OF DAMAGES: IN NO EVENT AND UNDER NO CIRCUMSTANCE SHALL GOODYEAR BE LIABLE TO THE BUYER FOR ANY INDIRECT, SPECIAL, INCIDENTAL, CONSEQUENTIAL, LOST PROFIT, LOSS OF BUSINESS, LOSS OF GOODWILL OR REPUTATION, PUNITIVE OR OTHER DAMAGE, COST (INCLUDING FOR REPLACEMENT TRANSPORTATION), EXPENSE OR LOSS OF ANY KIND. SOME STATES AND PROVINCES DO NOT ALLOW THE EXCLUSION OR LIMITATION OF INCIDENTAL OR CONSEQUENTIAL DAMAGES, SO THE ABOVE LIMITATION OR EXCLUSION MAY NOT APPLY TO YOU.

SAFETY WARNINGS

Property damage, serious injury or death may result from:

- **TIRE FAILURE DUE TO UNDERINFLATION/OVERLOADING/MISAPPLICATION.** Follow the vehicle owner’s manual or tire placard in the vehicle.
- **TIRE FAILURE DUE TO IMPACT DAMAGE/IMPROPER MAINTENANCE.** Tires should be inspected regularly by a qualified technician for signs of damage, such as punctures or impacts.
- **TIRE FAILURE DUE TO IMPROPER REPAIRS.** See Rubber Manufacturers Association (RMA) established repair procedures at www.rma.org and/or go to www.goodyear.com/truck for information on proper repair procedures.
- **EXPLOSION OF TIRE/RIM ASSEMBLY DUE TO IMPROPER MOUNTING.** Only specially trained persons should mount tires. When mounting tires, use safety cage and clip-on extension air hose to inflate.
- **FAILURE TO MOUNT RADIAL TIRES ON APPROVED RIMS.**
- **FAILURE TO DEFLATE SINGLE OR DUAL ASSEMBLIES COMPLETELY BEFORE DEMOUNTING.**
- **TIRE SPINNING.** On slippery surfaces such as snow, mud, ice, etc., do not spin tires in excess of 35 mph (56 kph), as indicated on the speedometer.
- **EXCESSIVE WHEEL SPINNING.** This can also result in tire disintegration or axle failure.

FOR SERVICE ASSISTANCE OR INFORMATION:

1. First contact the nearest Authorized Kelly Commercial Tire Retailer.
2. If additional assistance is required:

- | | |
|--|--|
| • In the U.S., write to –
Kelly Customer Assistance Center
Department 728
200 Innovation Way
Akron, OH 44316 | • In Canada, write to –
Kelly Customer Assistance Center
450 Kipling Avenue
Toronto, Ont. M8Z 5E1 |
|--|--|



1-866-FleetHQ / www.kellytires.com